

ELECTROFUSION FITTINGS

BRANCH SADDLE - LARGE BORE

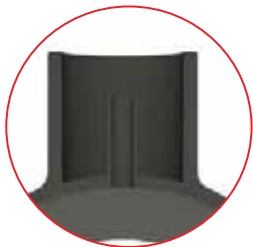


SIZE	PN WATER	SDR GAS	SDR RANGE	CODE	PRICE
250-400 x 90	16	11	7-17	4958047	530.00
250-400 x 110	16	11	7-17	4958048	621.41
250-400 x 125	16	11	7-17	4958049	698.02
250-400 x 160	16	11	7-17	4958050	1178.15
400 x 250	16	11	7-17	4958082	2313.25
450-800 x 90	16	11	7-26	4958051	576.02
450-800 x 110	16	11	7-26	4958052	675.96
450-800 x 125	16	11	7-26	4958053	760.79
450-800 x 160	16	11	7-26	4958054	1288.94
500-630 x 250	16	11	7-26	4958083	3362.75
560 x 400	16	11	7-26	4958084	16315.00
630 x 400	16	11	7-26	4958085	18019.00

Requires specialised installation tools - see page 107 for information

Weld Integrity Test

- A test port is incorporated into the saddle to enable a pressure test before cutting into the pipe



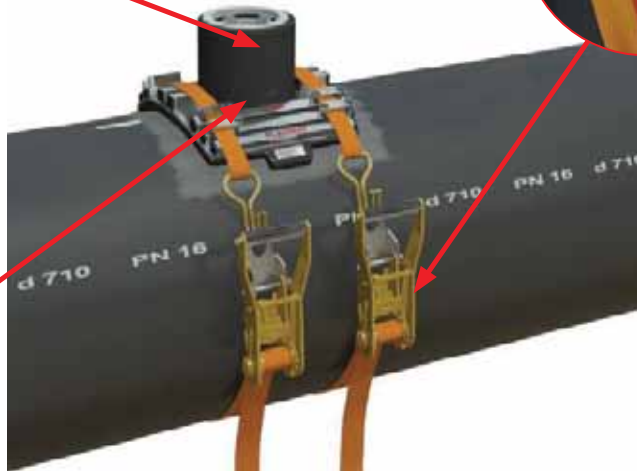
Correct Clamp Indicator Stamp

- Clamping Tool leaves a mark on the saddle to show if the correct sized clamps have been used at the correct tension



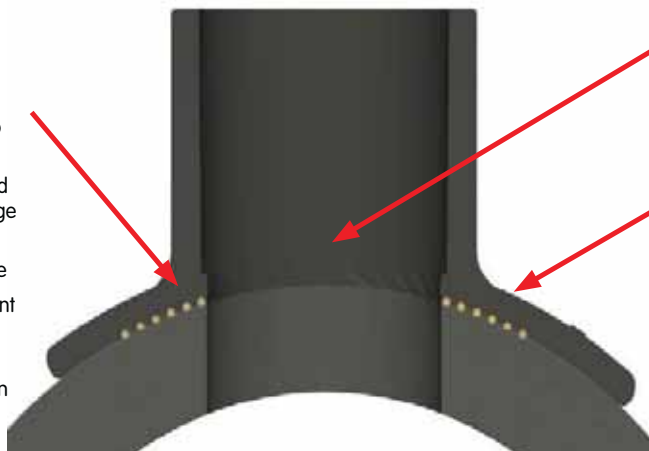
Correct Tightening Torque Indicator

- Indicated with visual gauge built into strap mechanism
- Larger sizes tightened with a torque wrench



Embedded Heating Wires

- Embedded heating wire limit the risk of physical damage to the wire
- Embedded wires are protected from environment during storage
- Instant heat transfer between coil and PE for fast gap closure
- Single welding time for ambient temperatures between -10°C to +45°C
- No temperature compensation required



Full Bore Outlet

- Full bore SDR11
- Better flow characteristics

Large Fusion Areas

- The welding zone reaches up to the internal bore of the outlet
- Ensures area of highest stress in the fitting occurs at the strongest part of the electrofusion weld
- Better durability under hard operating conditions