

## CONCRETE JACKING PIPES

### CONCRETE JACKING PIPES

Bilcon Industries is one of the leading manufacturers of precast concrete products in Singapore & Malaysia. We have been involved in supplying high quality concrete products since 1963 to meet the demand for infrastructure precast unit products. As early as the 70s, Bilcon Industries earned its reputation as a specialist in the manufacturing of spun reinforced concrete pipes.

The innovation never stops as we grow. Over the years, we had put in countless efforts in developing the production processes of high quality jacking pipes for trenchless tunnelling. Our high strength jacking pipes are presently the system of choice for leading contractors in Singapore. Bilcon Industries is now cooperating with reputable technology firms such as Schlüsselbauer Technology to increase our productivity through automation and introduce innovative precast civil products into the local market.

### CONCRETE JACKING PIPE RANGE

**Standard:** AS/NZS 4058:2007 Precast concrete pipes (pressure and non-pressure)

### BILCON AUSTRALIA CONCRETE JACKING PIPE TECHNICAL INFORMATION

Internal Diameter (mm)	External Diameter (mm)	Wall Thickness (mm)	Effective Length (mm)	Packer Thickness (mm)	Steel Collar Thickness (mm)	Weight (kg)	Max Jacking Load <sup>2</sup> (tonnes)	Collar Type
300	450	75	2000	12	2	430	75	F
375	584	104.5	2000	12	2	760	149	F
400	650	125	2000	12	2	990	204	F
450	650	100	2000	12	2	830	163	F
500	675	87.5	2000	12	2	775	147	F
600	775	87.5	2000	12	2	910	173	F
700	875	87.5	2000	12	2	1,040	199	F
800	1052	126	2000	12	4	1,760	462	F
900	1140	120	2000 <sup>1</sup>	18	4	1,850	481	F / B
1000	1250	125	2000 <sup>1</sup>	18	4	2,125	558	F / B
1050	1300	125	2000 <sup>1</sup>	18	4	2,220	583	F / B
1200	1470	135	2000 <sup>1</sup>	18	4	2,720	727	F / B
1350	1600	125	2000 <sup>1</sup>	18	6	2,780	734	B

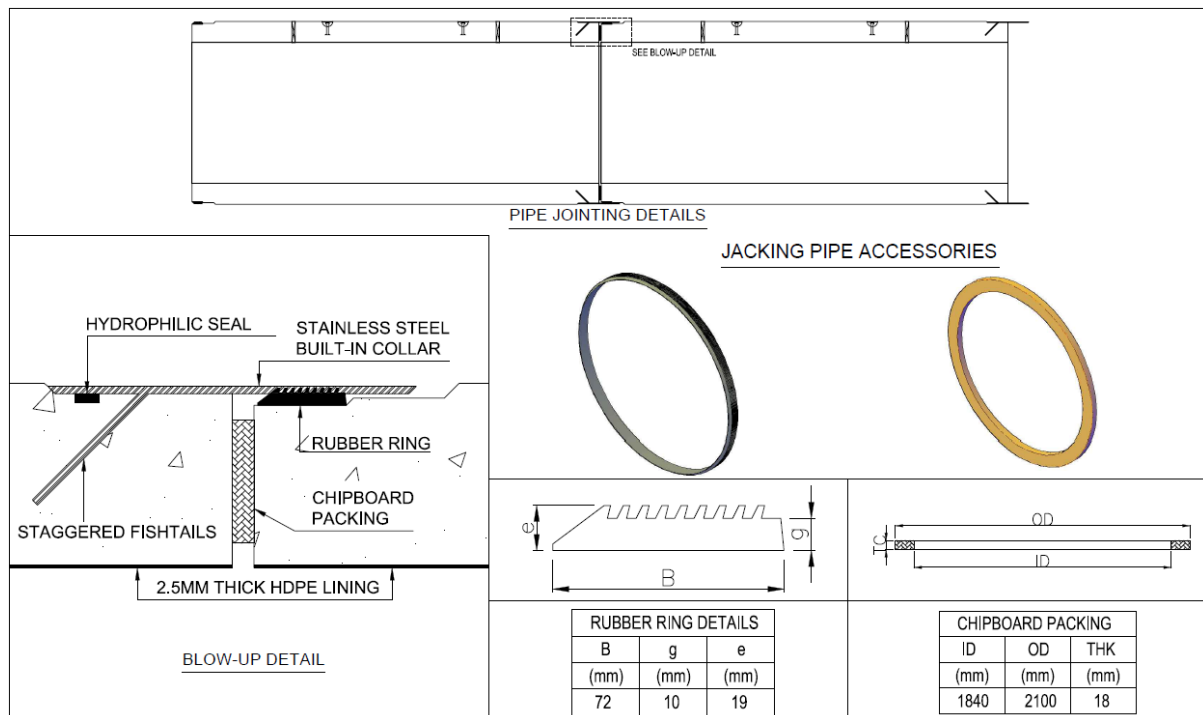
Internal Diameter (mm)	External Diameter (mm)	Wall Thickness (mm)	Effective Length (mm)	Packer Thickness (mm)	Steel Collar Thickness (mm)	Weight (kg)	Max Jacking Load <sup>2</sup> (tonnes)	Collar Type
1500	1780	140	2000 <sup>1</sup>	18	6	3,470	935	B
1650	1950	150	2000 <sup>1</sup>	18	6	4,080	1,113	B
1800	2170	185	2000 <sup>1</sup>	18	6	5,540	1,559	B
2000	2410	205	2900	18	8	9,890	1,944	B
2100	2470	185	2900	18	8	9,245	1,797	B
2400	2810	205	2900	18	10	11,680	2,300	B
2500	3000	250	2900	18	10	15,035	3,020	B
3000	3500	250	2900	18	10	17,770	3,573	B

1. Also available in effective lengths of 2900mm

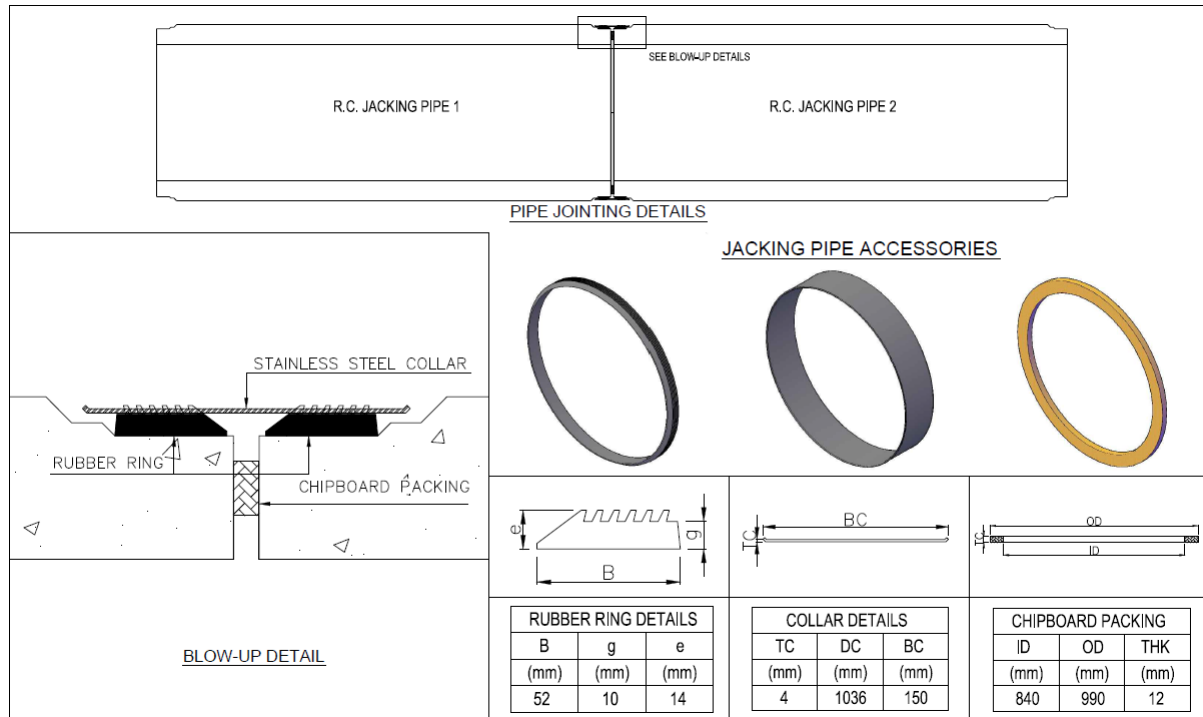
2. Max Jacking Loads calculated in accordance with BS EN 1916:2002 Annex B, with total safety factor of 3.33

## DRAWINGS

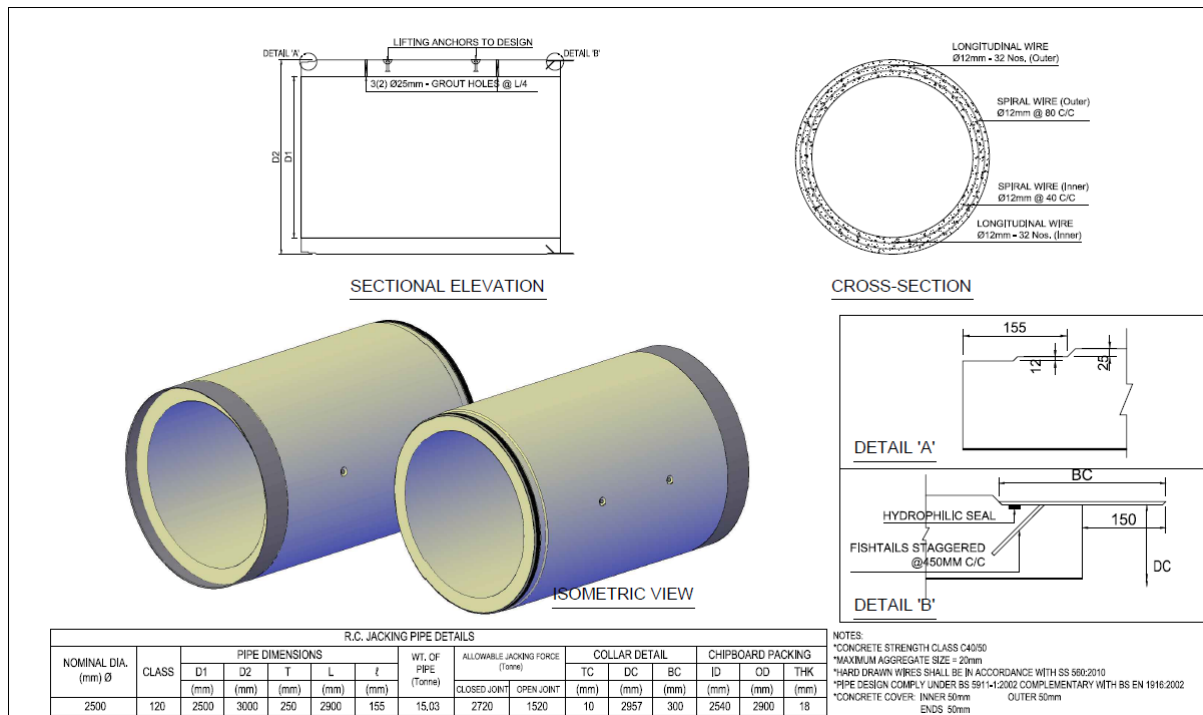
### Typical B-Series Detail



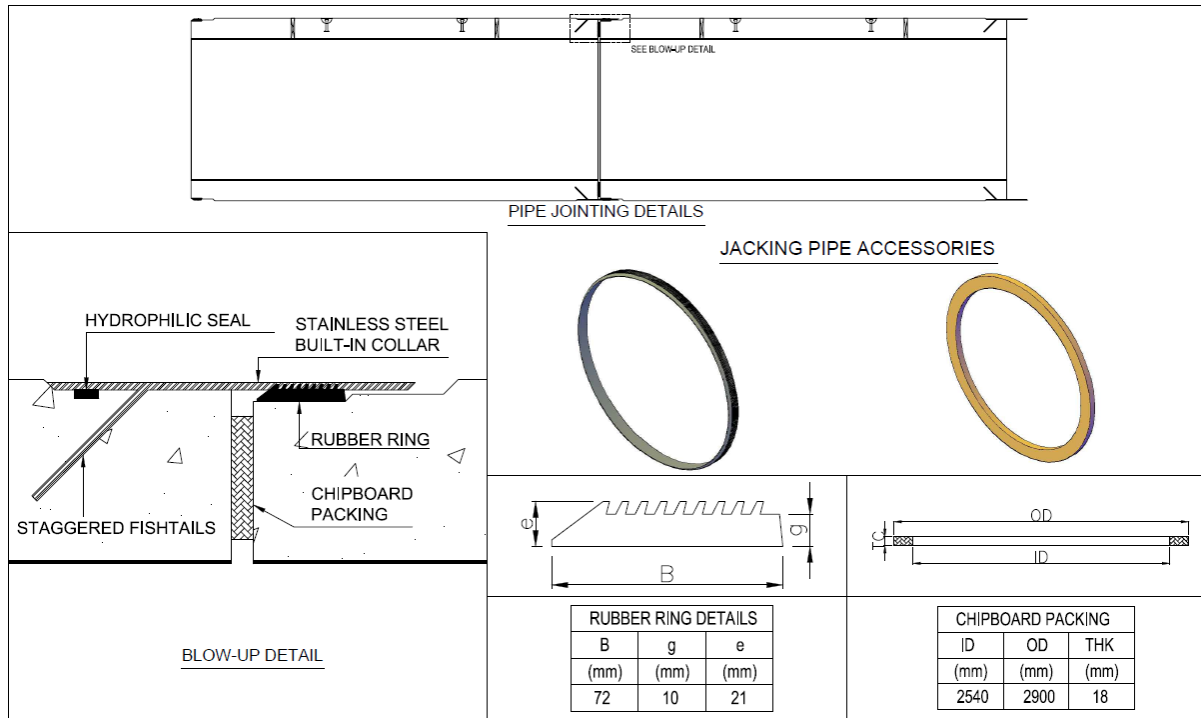
## Typical F-Series Detail



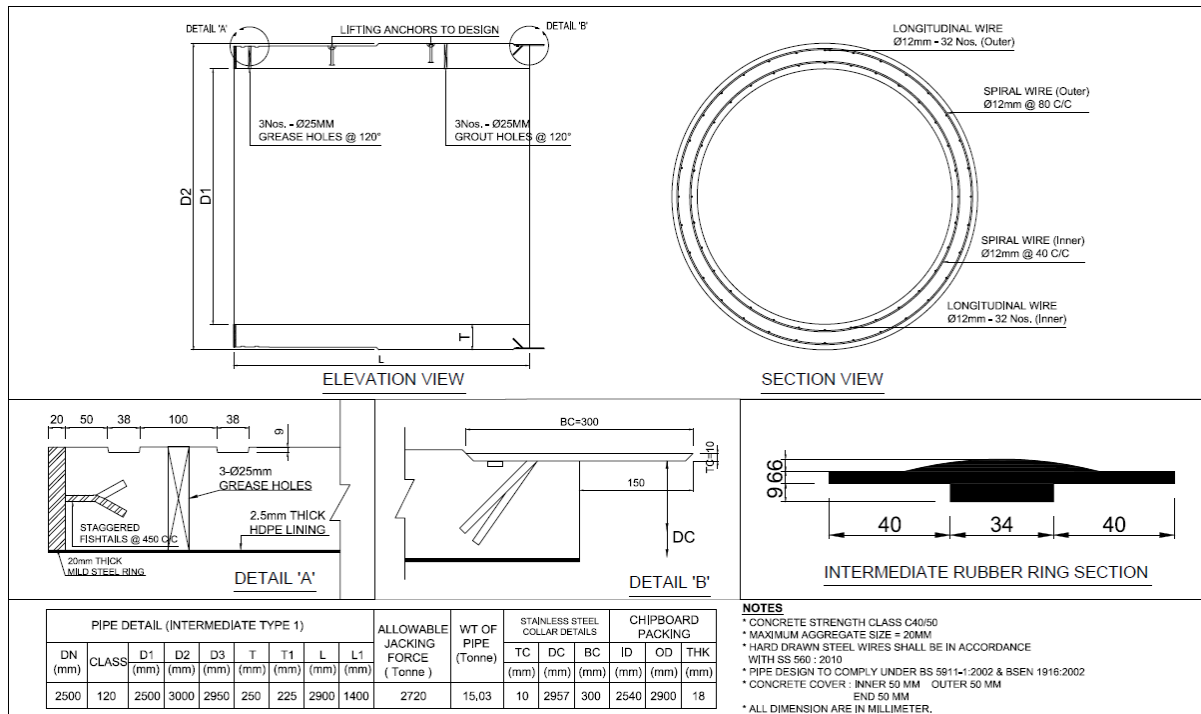
## Typical Pipe Properties



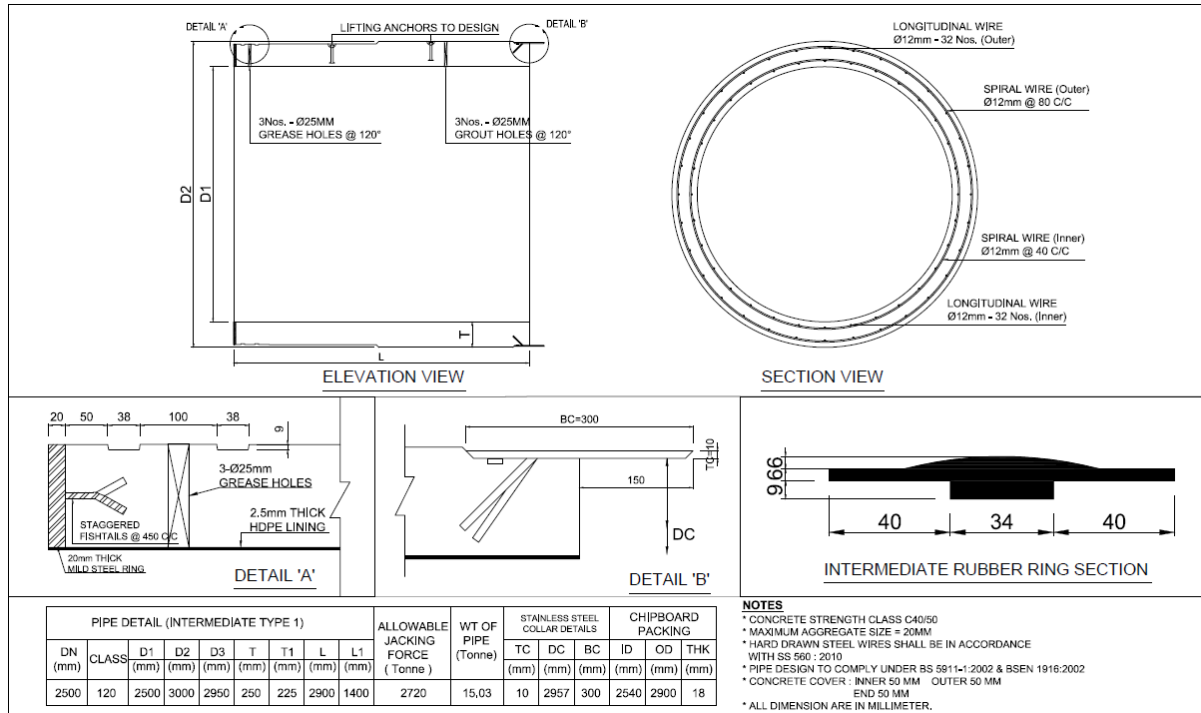
## Typical Pipe Jointing



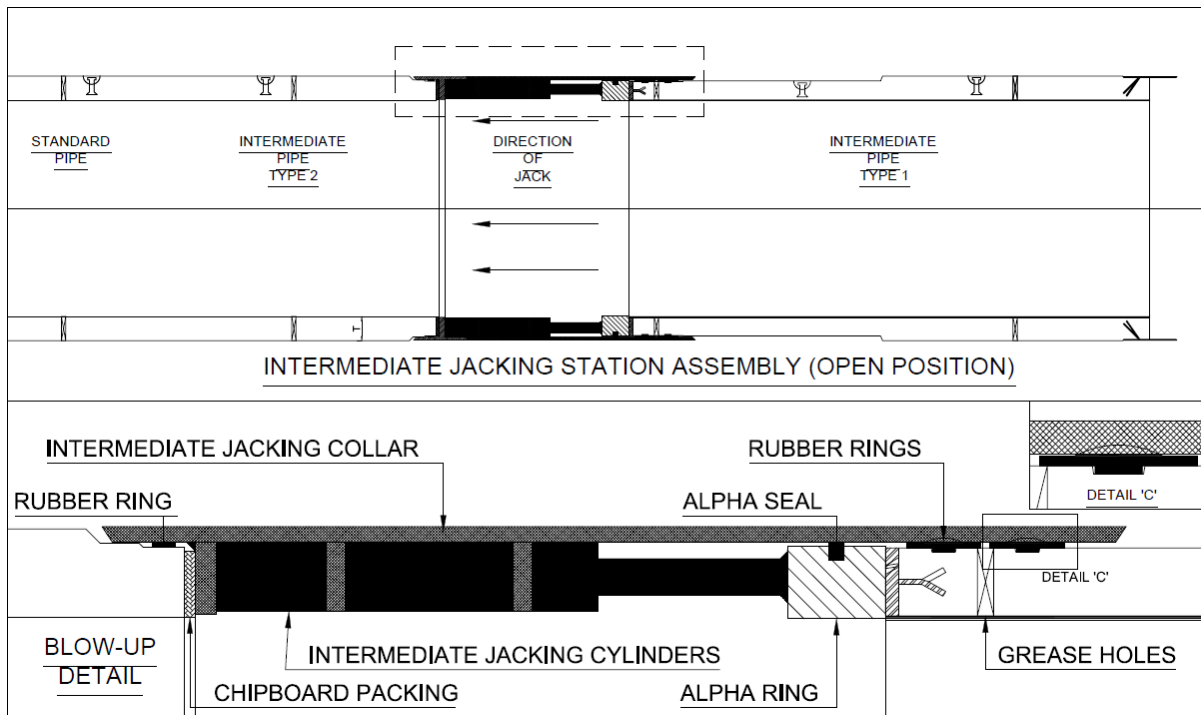
## Typical Inter Jacking Pipe – Intermediate 1 - Details



## Typical Inter Jacking Pipe – Intermediate 2 – Details



## Typical Inter Jacking Pipe – Assembly – Details



For further information please visit <http://www.BILCON.COM.AU>