



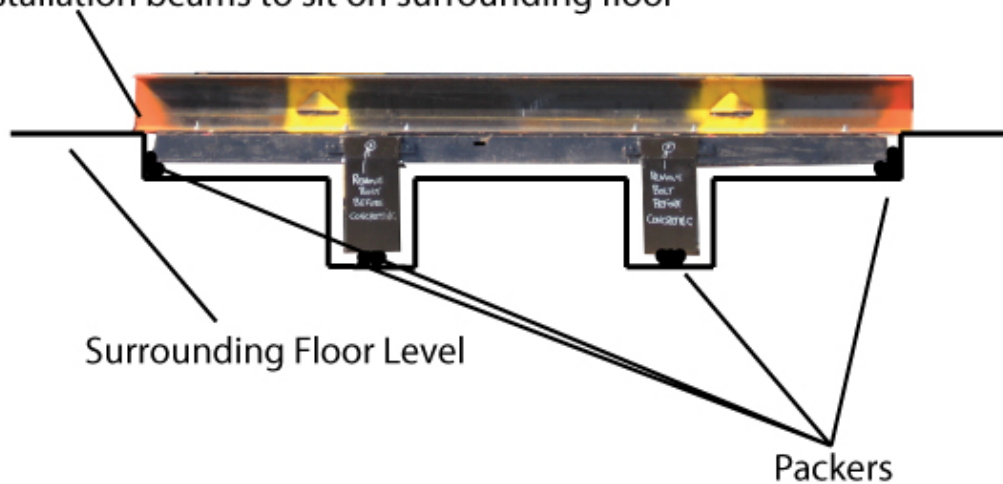
ACCESS COVERS AUSTRALIA

Access Covers Australia Pty Ltd ABN 39 825 047 084
22-28 Hawker Street Airport West Vic 3042 (Just off Matthews Avenue exit off the Tullamarine Freeway)
Phone: 61 3 9335 5355 Fax: 61 3 9335 6055

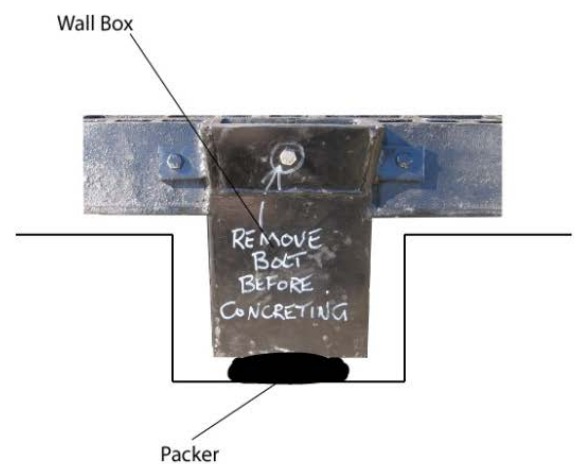
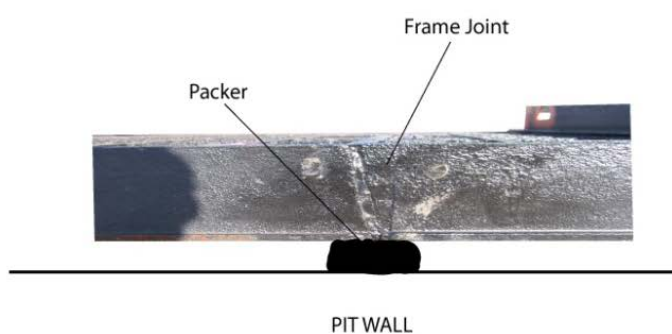
Access Covers Australia Multipart Installation Guide

1. Form pit wall rebate and beam rebate as per sketch supplied by Access Covers Australia
2. Place fully assembled multipart onto pit so the installation beams overhang the walls of the pit and sit on the finished level.

Installation beams to sit on surrounding floor



3. Pack under the frame joints, inside the beam rebate and in the corners of the unit to raise the unit 0-2mm higher than surrounding floor level. Packers can be metal, plastic or quickset grout.



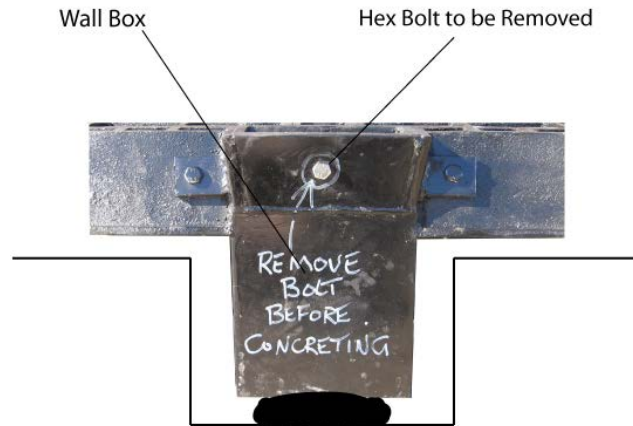
DRAFT



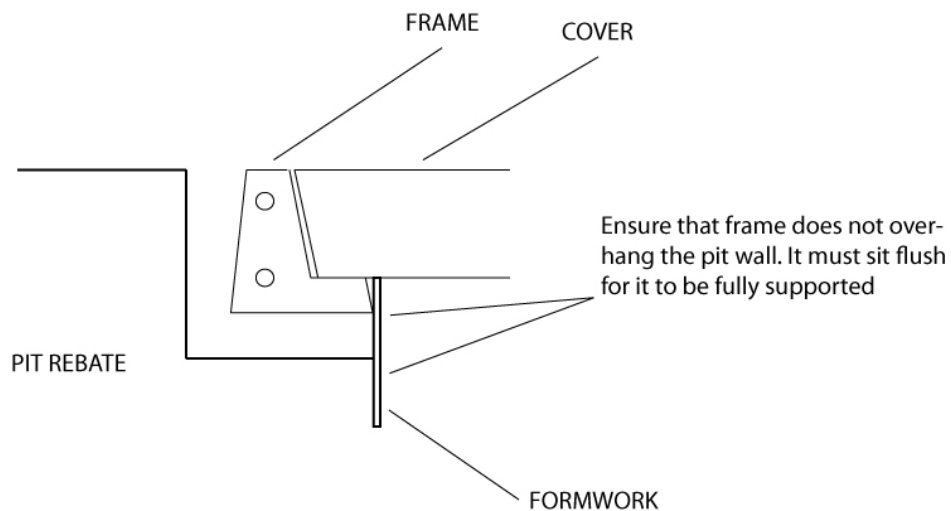
ACCESS COVERS AUSTRALIA

Access Covers Australia Pty Ltd ABN 39 825 047 084
22-28 Hawker Street Airport West Vic 3042 (Just off Matthews Avenue exit off the Tullamarine Freeway)
Phone: 61 3 9335 5355 Fax: 61 3 9335 6055

4. Remove hex bolts on each wall box. Remove installation beams (optional)



5. Gain access to pit from underneath or removing a cover. Each cover has 2x allen key bolts either side and they must be removed for the cover to be lifted. Only one cover may need to be removed in order to do this. Do not remove all covers unless full access is required. **Note: Approved Lifting Keys manufactured by Access Covers Australia are recommended to lift these covers out.**
6. Set up internal formwork. Ensure that the formwork does not project above the horizontal seating surface of the frame, otherwise the cover will not sit flush.



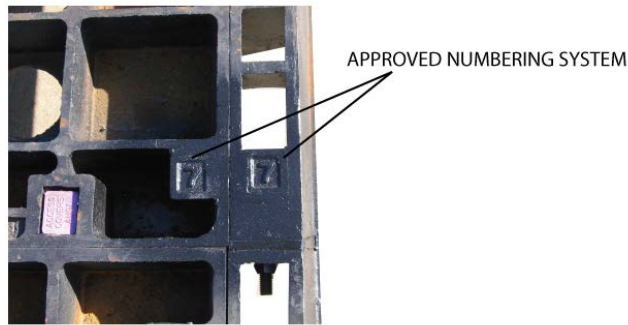
DRAFT



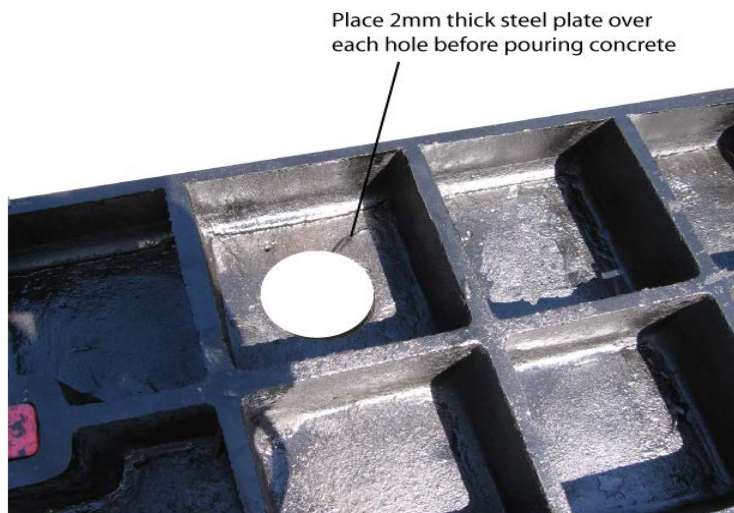
ACCESS COVERS AUSTRALIA

Access Covers Australia Pty Ltd ABN 39 825 047 084
22-28 Hawker Street Airport West Vic 3042 (Just off Matthews Avenue exit off the Tullamarine Freeway)
Phone: 61 3 9335 5355 Fax: 61 3 9335 6055

7. Replace covers in the same position they were taken out (Refer numbering system). Replace allen key bolts. Ensure there is no rocking movement and the covers sit flush against one another



8. Place 2mm steel plate over holes in covers to prepare for concrete pour.



9. Fill rebates, cellular frames (Class D & G only) and recessed covers with concrete (minimum 32Mpa). Vibrate concrete and ensure all cavities and pockets are completely filled. The concrete must FULLY support the frame all the way to the inside edge. Trowel surface to achieve required finish.

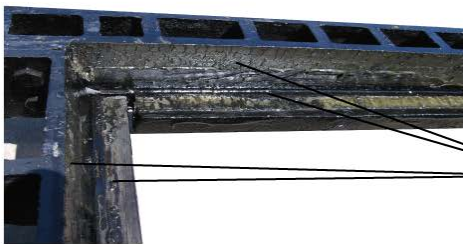
DRAFT



ACCESS COVERS AUSTRALIA

Access Covers Australia Pty Ltd ABN 39 825 047 084
22-28 Hawker Street Airport West Vic 3042 (Just off Matthews Avenue exit off the Tullamarine Freeway)
Phone: 61 3 9335 5355 Fax: 61 3 9335 6055

10. After the concrete has cured, strip internal formwork. (This can be done by removing just 1 cover to gain access inside the pit)
11. Thoroughly clean the seat areas of the cover and frame and re-grease. ***It is imperative that these surfaces are dirt and dust free***



CLEAN AREAS
THOROUGHLY AND
RE-GREASE



12. Replace covers, locking bolts and dust caps

DRAFT